

FREEHOLD



House - Detached (EPC Rating: C)

7 ROCKERY CLOSE, OFF UPPINGHAM ROAD,
LEICESTER, LE5 4DQ

£450,000

 **SETHS**

 4  3  2  C

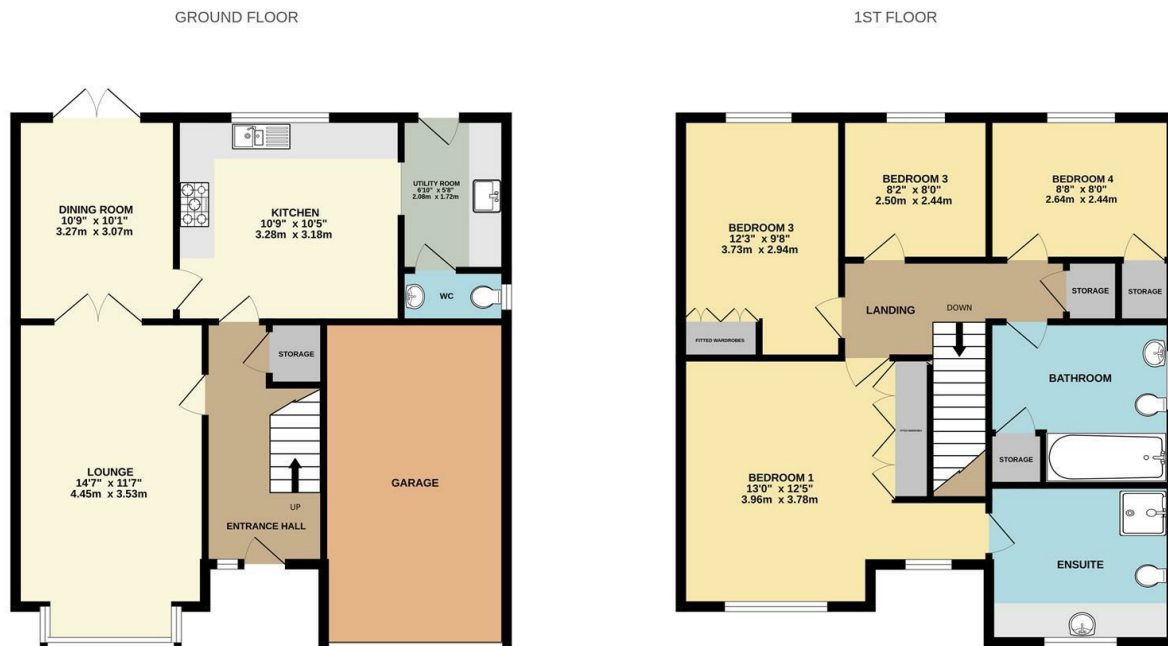
4 Bedroom House - Detached located in Leicester

PEACEFUL AND POPULAR LOCATION

A 4 Bedroom detached property situated in the popular area of HUMBERSTONE.

In brief the property comprises; entrance hall, lounge, dining room, kitchen, utility room, downstairs WC, four bedrooms inc an en-suite and a family bathroom. The property benefits from an integral garage along with a driveway and spacious rear garden.

Contact Seths to arrange a viewing.

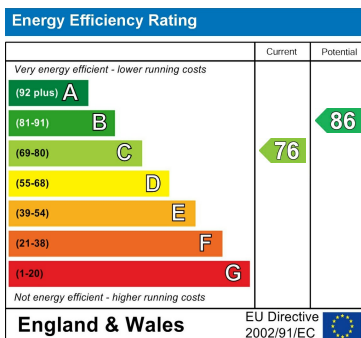


Whilst every attempt has been made to ensure the accuracy of the floorplan contained here, measurements of doors, windows, rooms and any other items are approximate and no responsibility is taken for any error, omission or mis-statement. This plan is for illustrative purposes only and should be used as such by any prospective purchaser. The services, systems and appliances shown have not been tested and no guarantee as to their operability or efficiency can be given.
Made with Metropix ©2025

Council Tax Band

E

Energy Performance Graph



Call us on

0116 266 9977

sales@seths.co.uk

www.seths.co.uk

Agents Note: Whilst every care has been taken to prepare these particulars, they are for guidance purposes only. All measurements are approximate and are for general guidance purposes only and whilst every care has been taken to ensure their accuracy, they should not be relied upon and potential buyers are advised to recheck the measurements.